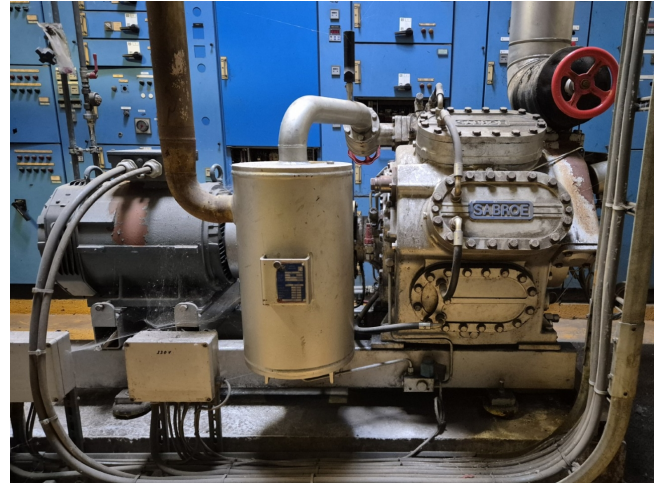


Sabroe SMC 108 L

Specifications

Marca	Sabroe
Tipo	SMC 108 L
Refrigerante	NH 3 (ammonia)
Electromotor Specs	50/60 Hz - 37/42,5 kW - 1460/1760 RPM
Piston Descargador	✓
Control de capacidad	✓
Sober Bancada	✓
Presostatos	✓
Manómetros de Presion	✓
Separador de aceite	✓
Mirilla	✓
m3 / h	565
Comentarios	Y.o.b. 2001
Stock	1



Description

Used Sabroe SMC 108 L

Used Sabroe SMC 108 L reciprocating compressor on R717 (Ammonia). Complete with a Schorch KN7200M-BB01B-401 electric motor - 50/60 Hz - 37/42,5 kW - 1460/1760 RPM, oil separator, pressure and safety switches/gauges. The compressor has a displacement of 565 m³/h.

*Why choose for HOSBV? Were not only the largest used refrigeration specialist in Europe, but also, we deliver all equipment including an extensive test, warranty and industrial cleaning.

*Optional we can also perform a new paint job and arrange the logistics.

